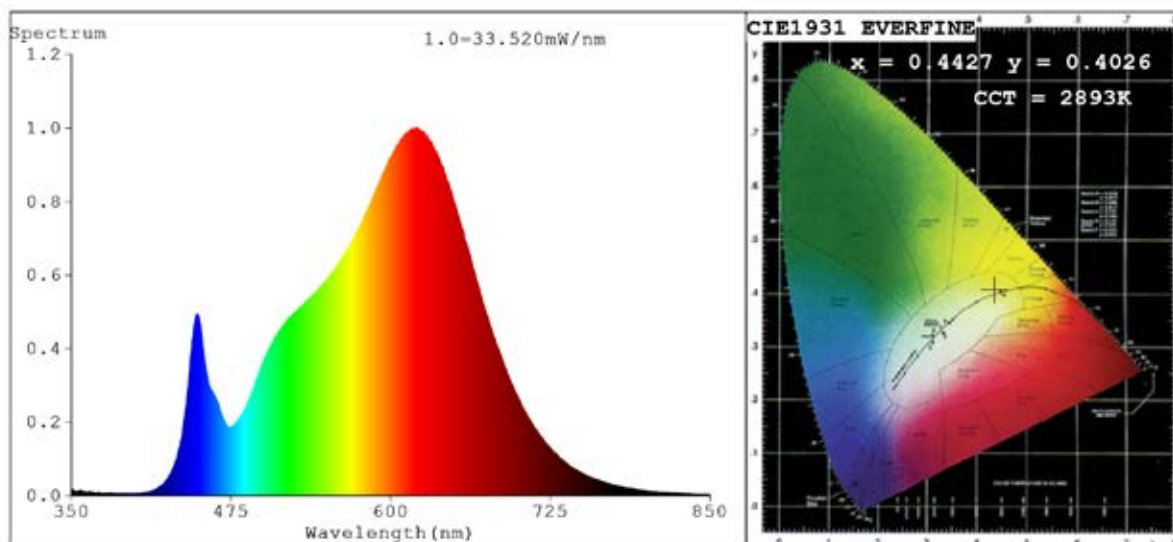


Spectrum Test Report



Color Parameters:

Chromaticity Coordinate: $x=0.4427$ $y=0.4026$ $u'=0.2549$ $v'=0.5217$
 CCT=2893K (Duv=-0.0013) Dominant WL: $\lambda_d = 583.8nm$ Purity=53.7%
 Ratio: R=25.1% G=72.2% B=2.7%; Peak WL: $\lambda_p = 620.7nm$ FWHM=149.5nm
 Render Index: Ra=92.8 CRI=90.4 TM30: Rf=90 Rg=101
 R1 =93 R2 =97 R3 =99 R4 =94 R5 =94 R6 =96 R7 =91
 R8 =80 R9 =55 R10=92 R11=95 R12=87 R13=94 R14=99 R15=88

Photo Parameters:

Flux = 1599 lm Eff. : 110.09 lm/W $P_e = 5.463 W$

Electrical parameters:

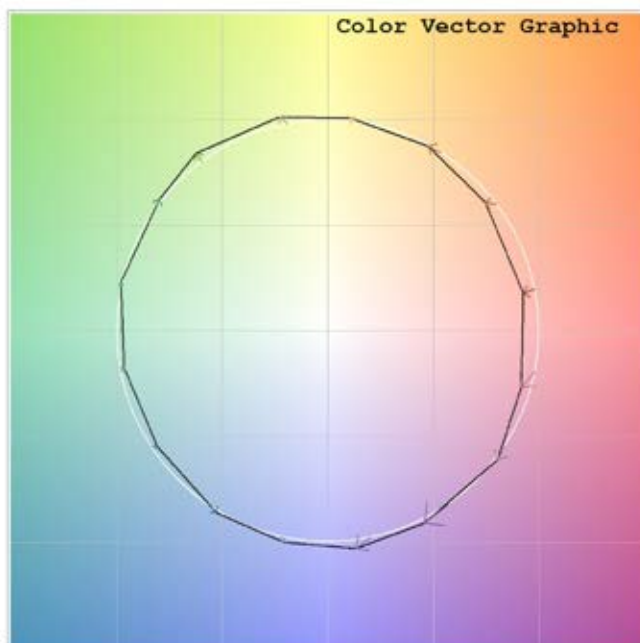
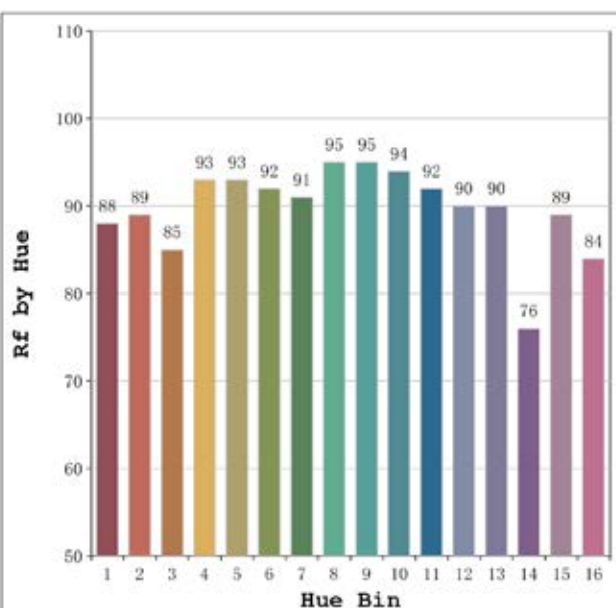
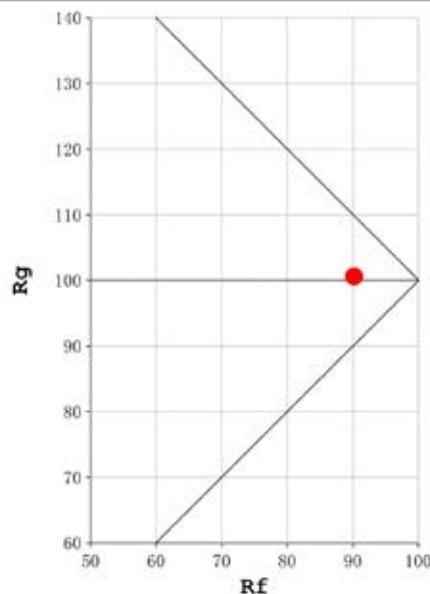
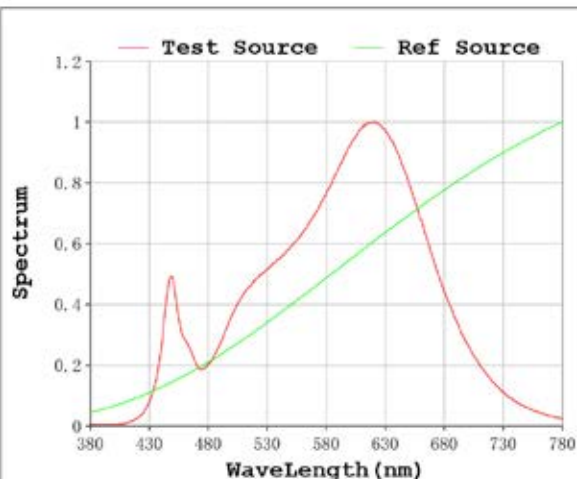
V = 23.998 V I = 0.6051 A P = 14.52 W PF = 1.000

Status: Integral T = 785 ms $I_p = 49484$ (76%)

Model: Ultra slim wall washer
 Tester: Sergio Carneros
 Temperature: 25Deg
 Manufacturer: Luz Negra

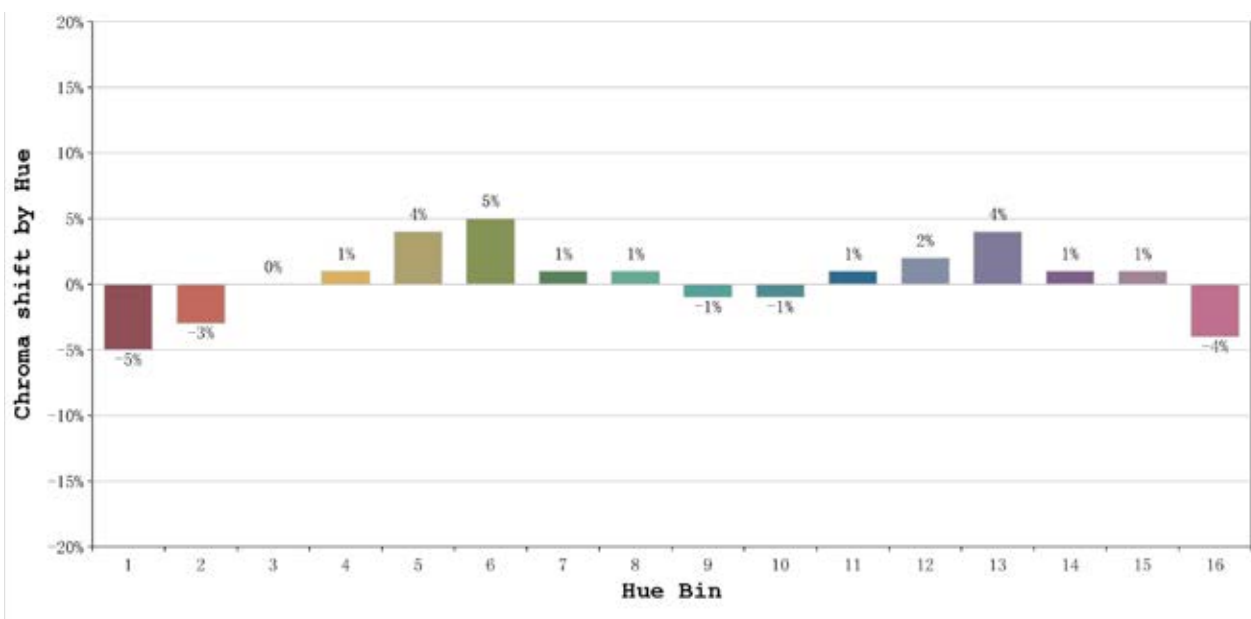
Number: Guoying1
 Date: 2025-05-22 15:59:27
 Humidity: 40%
 Remarks: 100cm de tira flexible

Rf: 90 CCT: 2893 K u': 0.2549
Rg: 101 Duv: -0.0013 v': 0.5217



Model:Ultra slim wall washer
Tester:Sergio Carneros
Temperature:25Deg
Manufacturer:Luz Negra

Number:Guoying1
Date:2025-05-22 15:59:27
Humidity:40%
Remarks:100cm de tira flexible



Hue Bin	Hue Angle	Rf	Graphic shift(%)	
			Chroma	Hue
1	0.0° - 22.5°	88	-5	0
2	22.5° - 45.0°	89	-3	4
3	45.0° - 67.5°	85	0	7
4	67.5° - 90.0°	93	1	3
5	90.0° - 112.5°	93	4	3
6	112.5° - 135.0°	92	5	0
7	135.0° - 157.5°	91	1	-4
8	157.5° - 180.0°	95	1	-2
9	180.0° - 202.5°	95	-1	0
10	202.5° - 225.0°	94	-1	2
11	225.0° - 247.5°	92	1	4
12	247.5° - 270.0°	90	2	2
13	270.0° - 292.5°	90	4	-7
14	292.5° - 315.0°	76	1	-13
15	315.0° - 337.5°	89	1	-6
16	337.5° - 360.0°	84	-4	-7

Model:Ultra slim wall washer
Tester:Sergio Carneros
Temperature:25Deg
Manufacturer:Luz Negra

Number:Guoying1
Date:2025-05-22 15:59:27
Humidity:40%
Remarks:100cm de tira flexible